

NOW PRESENTING

Spec Home 232

*Spacious 2,700 Square Feet
Single Family Home by Costa*

**Select your finishes and upgrades
and be move-in ready in as little
as 3 months!**

- 4 Bedroom, 2.5 Bath Design
- 3-Car Integral Garage
- 80% Brick Exterior
- All Concrete Driveway and Walkway
- Costa Series finishes
- Upgraded dining room ceiling
- Two-sided fireplace between great room and study

House is framed, bricked and awaiting buyer's interior selections. Buy now and Costa will finish with all of your color, fixture and upgrade choices. This is your chance to be a part of this neighborhood in as little as *3 months*.

All this for \$376,300!

**Call John Thatcher today for
more information or a tour!**



Costa Homebuilders
.com

The Standard of Excellence



Contact John Thatcher

6 Clairton Boulevard, Pittsburgh, PA 15236

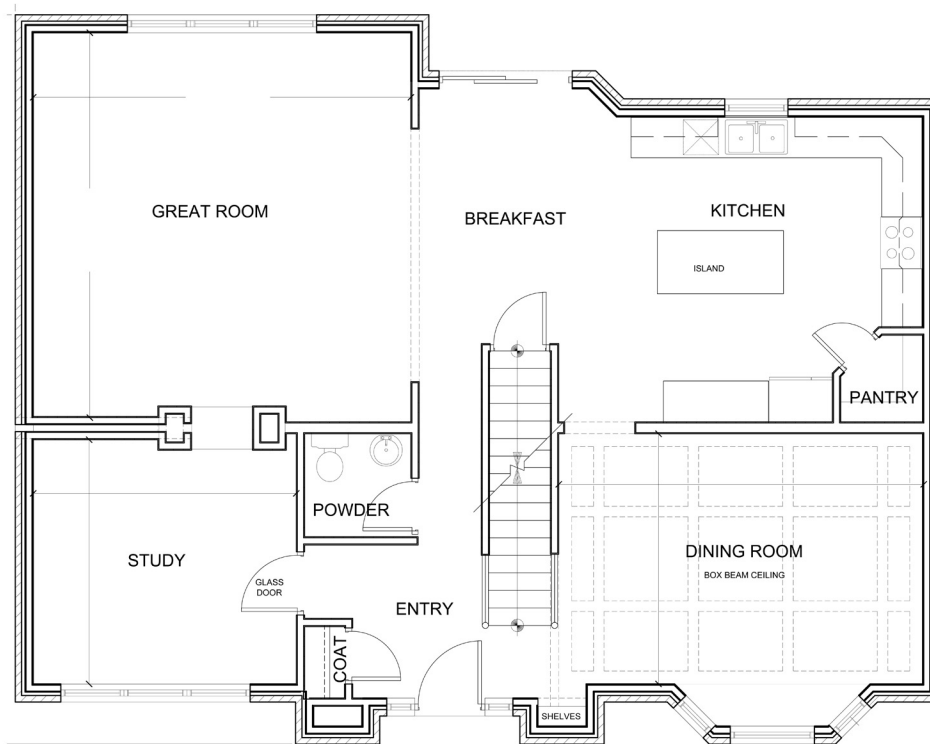
412-650-6810 Office

412-370-1333 Cell

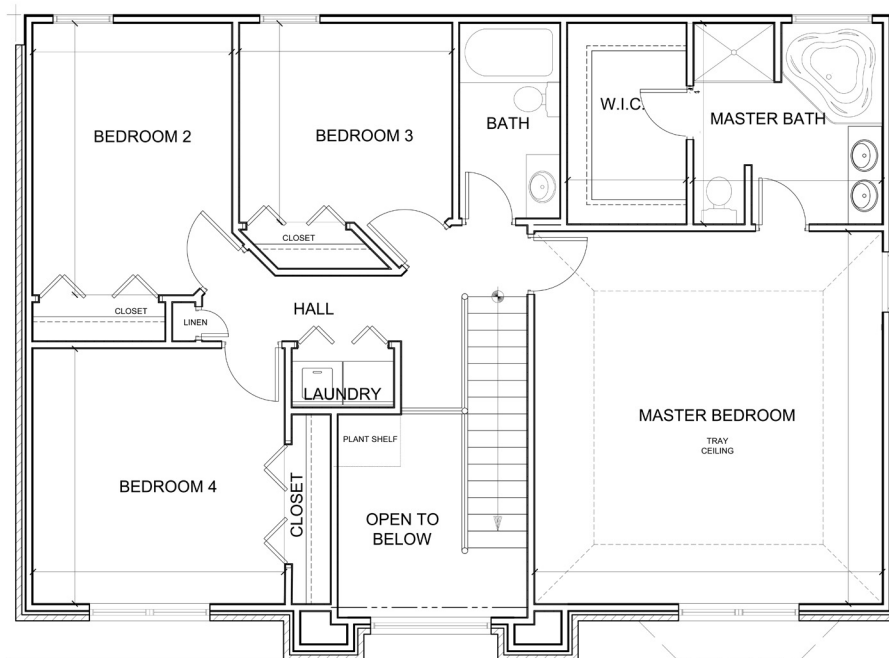
jthatcher@verizon.net



NOW PRESENTING



First Floor



Second Floor



Contact John Thatcher
6 Clairton Boulevard, Pittsburgh, PA 15236
412-650-6810 Office
412-370-1333 Cell
jthatcher@verizon.net

